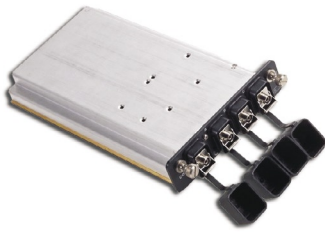


Multiple test access module



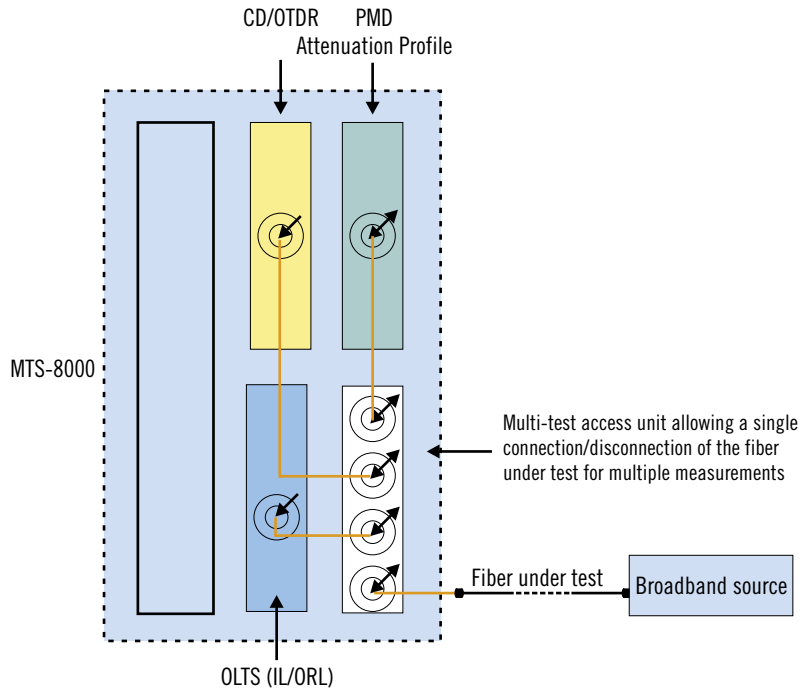
Innovative module with up to six interconnected test functions

Multi-Test Access Unit Module

- Fiber Characterization made easier, fiber commissioning (OTDR & IL)
- 25% time saving for fiber characterization
- Up to 6 interconnected test functions (OTDR, CD, PMD, IL, SA, ORL)
- Reduces fiber connect/disconnect
- Up to 3 modules connected
- Automatically switches from one module to another



MTAU interconnections



How the MTAU functions

Specifications

Multi-test access unit

	E81MTAU2 (2 ports)	E81MTAU3 (3 ports)
Wavelength range	1260 to 1640 nm	1260 to 1640 nm
Insertion loss (max)	1 dB	1.5 dB
Return loss (max)	50 dB	50 dB
PDL ⁽¹⁾ (max)	0.1 dB	0.1 dB
Repeatability ⁽²⁾ (max)	0.01 dB	0.01 dB

(1) Polarization dependent loss

(2) At constant temperature and polarization